

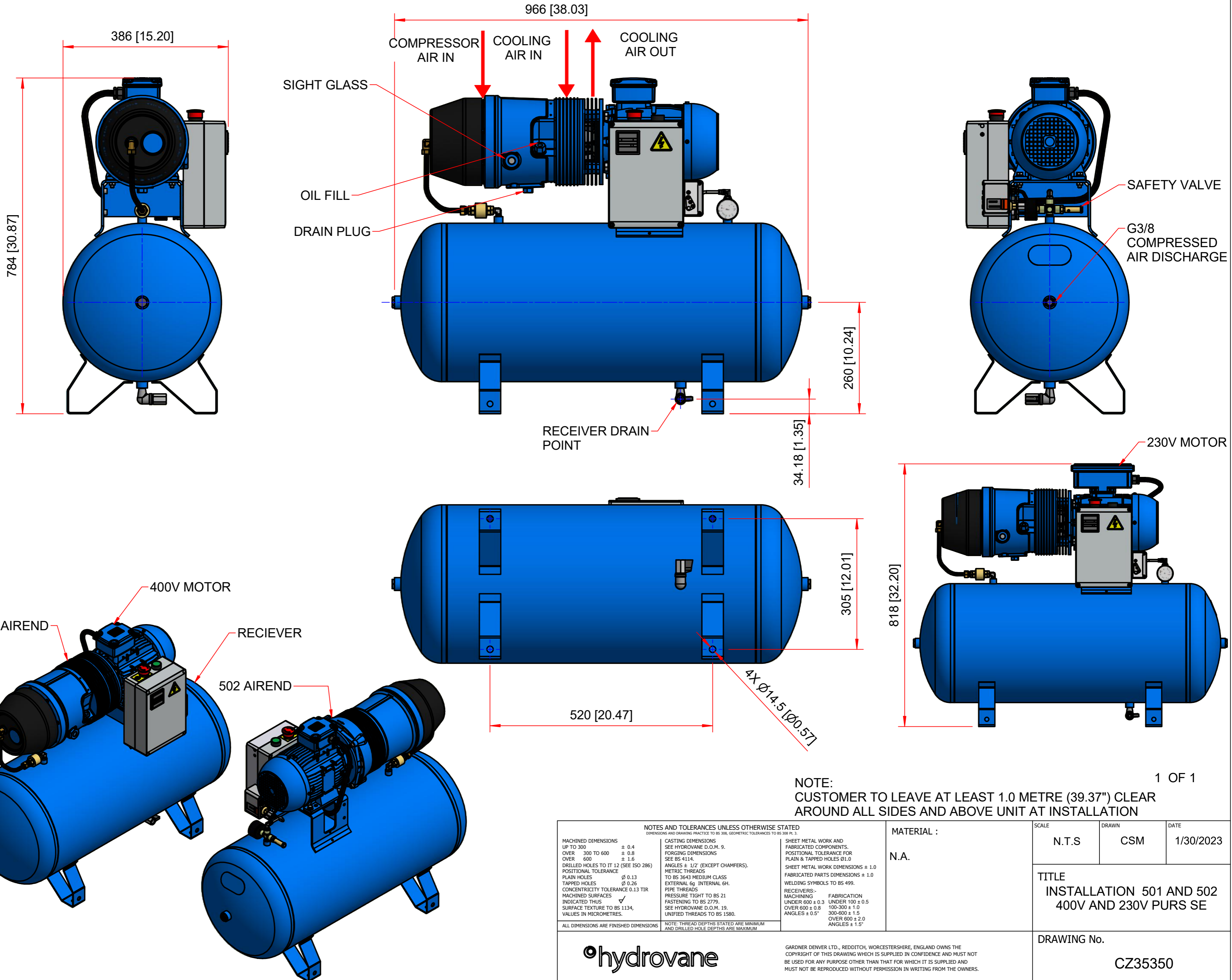
PROJECTION - THIRD ANGLE
ALL DIMENSIONS IN MILLIMETRES

DO NOT SCALE

REMOVE ALL BURRS AND SHARP EDGES

| ISSUE | A NOTE | DATE | INITIALS |
|-------|---------|----------|----------|
| A | 1153231 | 31.01.23 | CSM |

MODIFICATION
INITIAL ISSUE



FIRST USE
501/502 PURS

NOTE:
CUSTOMER TO LEAVE AT LEAST 1.0 METRE (39.37") CLEAR
AROUND ALL SIDES AND ABOVE UNIT AT INSTALLATION

1 OF 1

| NOTES AND TOLERANCES UNLESS OTHERWISE STATED DIMENSIONS AND DRAWING PRACTICE TO BS 308, GEOMETRIC TOLERANCES TO BS 308 PL.3 | | | MATERIAL : | SCALE | DRAWN | DATE |
|--|---|--|------------|------------------------|-------|-----------|
| MACHINED DIMENSIONS UP TO 300 ± 0.4 OVER 300 TO 600 ± 0.8 OVER 600 ± 1.6 DRILLED HOLES TO IT 12 (SEE ISO 286) POSITIONAL TOLERANCE PLAIN HOLES ∅ 0.13 TAPPED HOLES ∅ 0.26 CONCENTRICITY TOLERANCE 0.13 TIR MACHINED SURFACES SURFACE TEXTURE TO BS 1134, VALUES IN MICROMETRES. | CASTING DIMENSIONS SEE HYDROVANE D.O.M. 9, FORGING DIMENSIONS SEE BS 4114, ANGLES ± 1/2° (EXCEPT CHAMFERS), METRIC THREADS TO BS 3643 MEDIUM CLASS EXTERNAL 6g INTERNAL 6h, PIPE THREADS PRESSURE TIGHT TO BS 21 FASTENING TO BS 2779, SEE HYDROVANE D.O.M. 19, UNIFIED THREADS TO BS 1580. | SHEET METAL WORK AND FABRICATED COMPONENTS, POSITIONAL TOLERANCE FOR PLAIN & TAPPED HOLES ∅1.0 SHEET METAL WORK DIMENSIONS ± 1.0 FABRICATED PARTS DIMENSIONS ± 1.0 WELDING SYMBOLS TO BS 499, RECEIVERS- MACHINING UNDER 600 ± 0.3 OVER 600 ± 0.8 FURNITURE UNDER 100 ± 0.5 100-300 ± 1.0 300-600 ± 1.5 OVER 600 ± 2.0 ANGLES ± 1.5° | N.A. | N.T.S | CSM | 1/30/2023 |
| TITLE INSTALLATION 501 AND 502 400V AND 230V PURS SE | | | | DRAWING No. CZ35350 | | |



GARDNER DENVER LTD., REDDITCH, WORCESTERSHIRE, ENGLAND OWNS THE
COPYRIGHT OF THIS DRAWING WHICH IS SUPPLIED IN CONFIDENCE AND MUST NOT
BE USED FOR ANY PURPOSE OTHER THAN THAT FOR WHICH IT IS SUPPLIED AND
MUST NOT BE REPRODUCED WITHOUT PERMISSION IN WRITING FROM THE OWNERS.